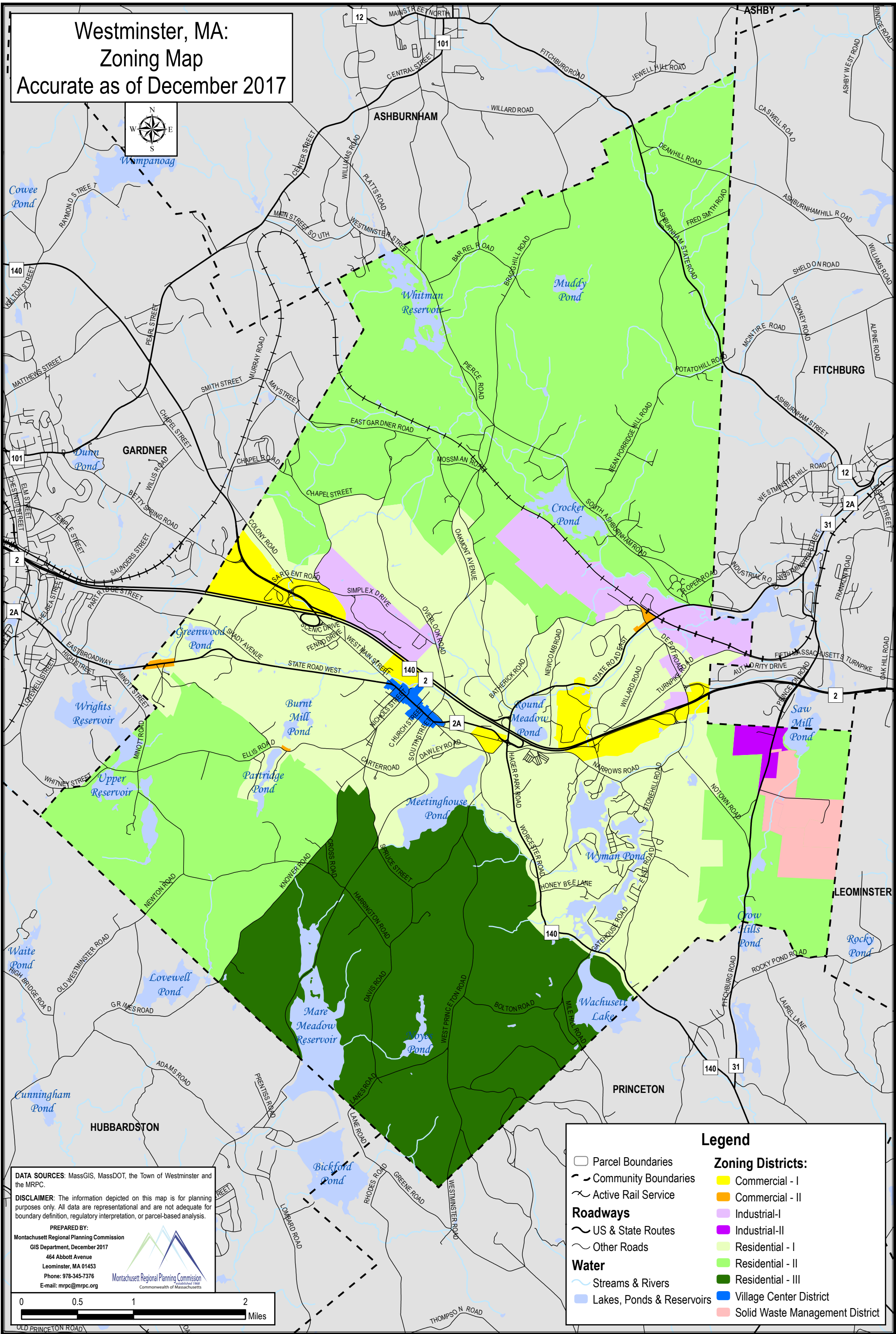



Westminster, MA:
Zoning Map
Accurate as of December 2017

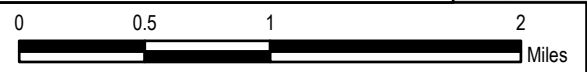


DATA SOURCES: MassGIS, MassDOT, the Town of Westminster and the MRPC.

DISCLAIMER: The information depicted on this map is for planning purposes only. All data are representational and are not adequate for boundary definition, regulatory interpretation, or parcel-based analysis.

PREPARED BY:
Montachusett Regional Planning Commission
GIS Department, December 2017
464 Abbott Avenue
Leominster, MA 01453
Phone: 978-345-7376
E-mail: mrpc@mrpc.org


Montachusett Regional Planning Commission
Commonwealth of Massachusetts



Legend

Parcel Boundaries

Community Boundaries

Active Rail Service

Roadways

US & State Routes

Other Roads

Water

Streams & Rivers

Lakes, Ponds & Reservoirs

Zoning Districts:

- Commercial - I
- Commercial - II
- Industrial-I
- Industrial-II
- Residential - I
- Residential - II
- Residential - III
- Village Center District
- Solid Waste Management District