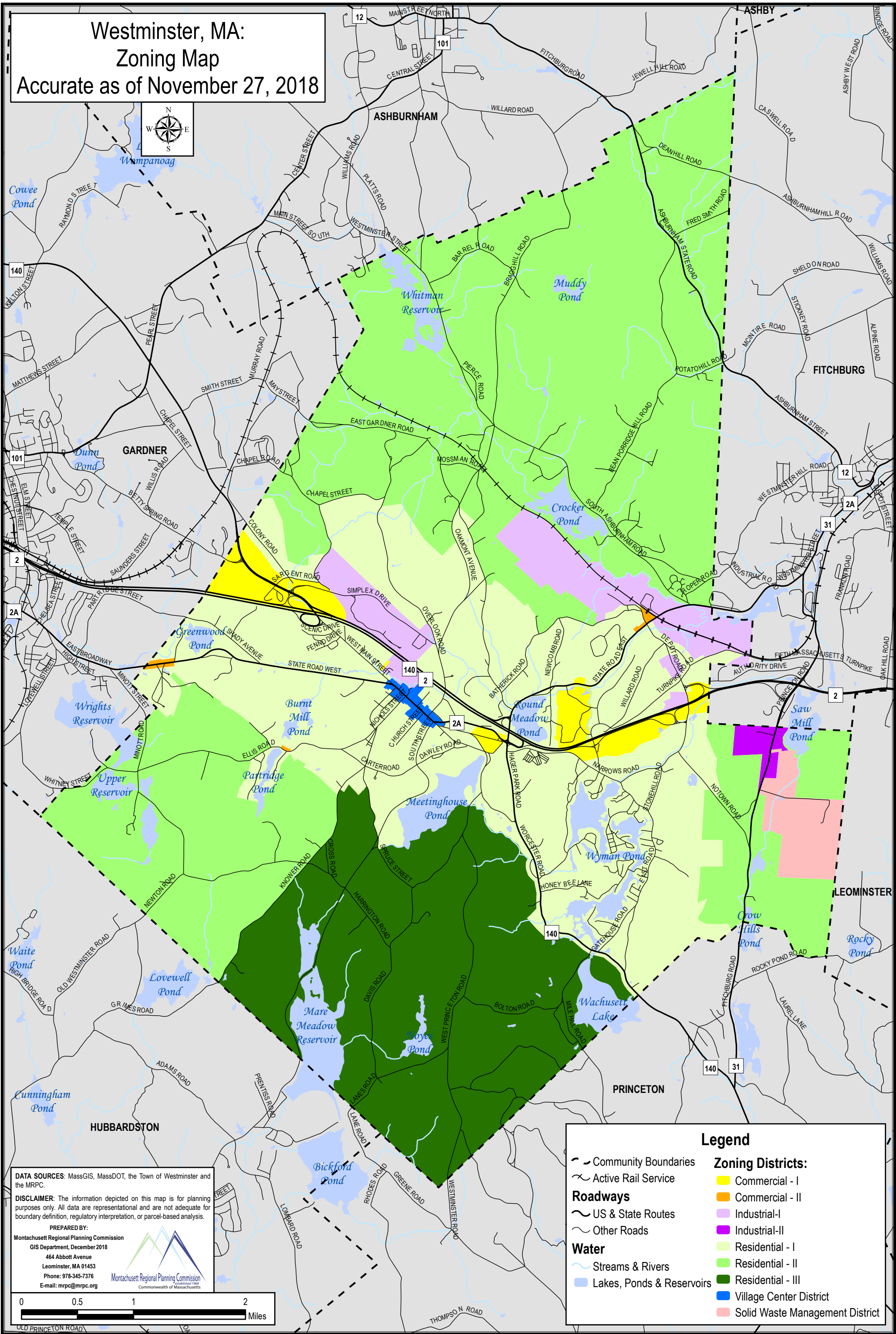



Westminster, MA:
Zoning Map
Accurate as of November 27, 2018

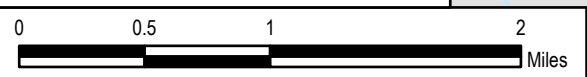


DATA SOURCES: MassGIS, MassDOT, the Town of Westminster and the MRPC.

DISCLAIMER: The information depicted on this map is for planning purposes only. All data are representational and are not adequate for boundary definition, regulatory interpretation, or parcel-based analysis.

PREPARED BY:
Montachusett Regional Planning Commission
GIS Department, December 2018
464 Abbott Avenue
Leominster, MA 01453
Phone: 978-345-7376
E-mail: mrpc@mrpc.org


Montachusett Regional Planning Commission
Established 1968
Commonwealth of Massachusetts



Legend

- Community Boundaries
- Active Rail Service
- Roadways**
 - US & State Routes
 - Other Roads
- Water**
 - Streams & Rivers
 - Lakes, Ponds & Reservoirs

Zoning Districts:

- Commercial - I
- Commercial - II
- Industrial-I
- Industrial-II
- Residential - I
- Residential - II
- Residential - III
- Village Center District
- Solid Waste Management District