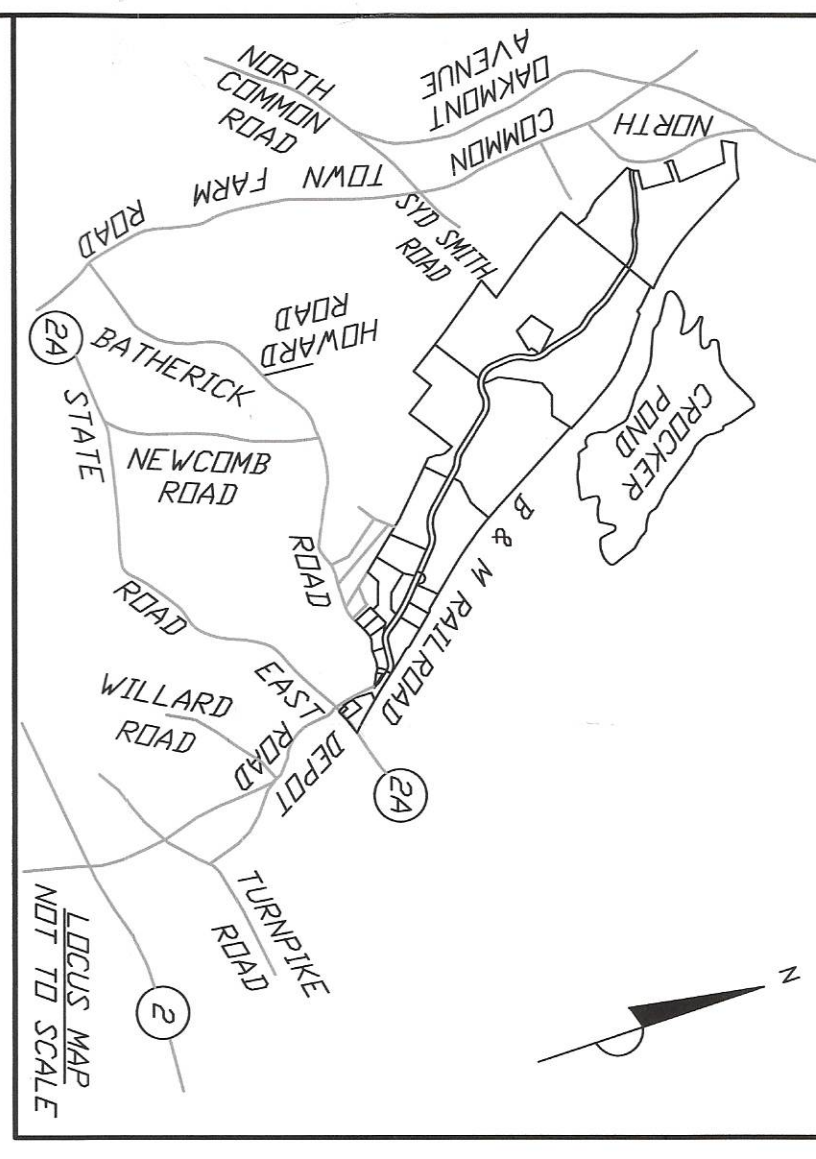


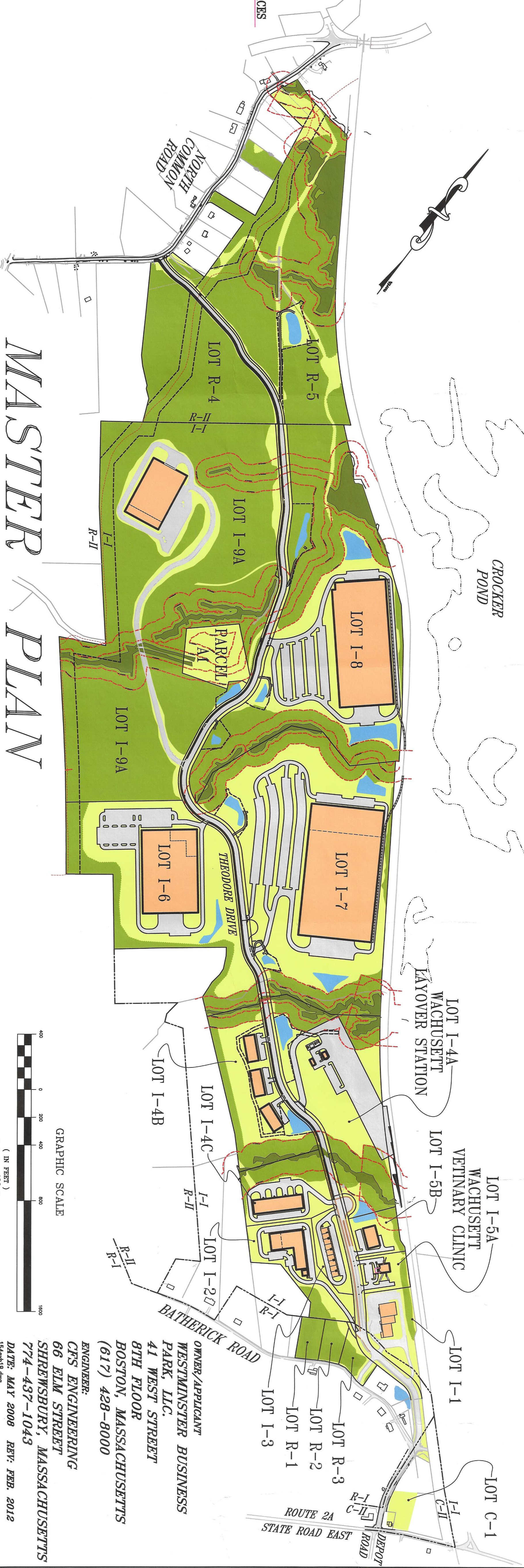
March 2012



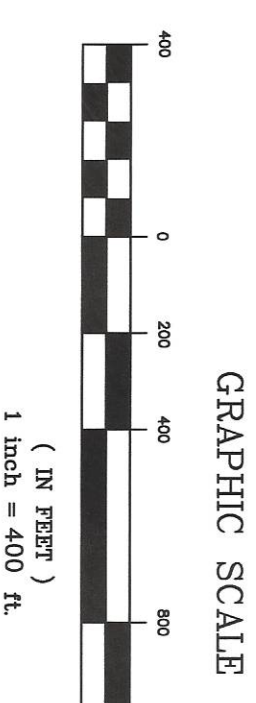
**POTENTIAL FULL BUILDOUT**

LOT #	BUILDING AREA	# OF PARKING SPACES
LOT 1-1	23,789 Sq. Ft.	40 SPACES
LOT 1-2	75,000 Sq. Ft.	84 SPACES
LOT 1-3	18,000 Sq. Ft.	37 SPACES
LOT 1-4A	1,500 Sq. Ft.	49 SPACES
LOT 1-4B-1	15,200 Sq. Ft.	17 SPACES
LOT 1-4B-2	15,200 Sq. Ft.	17 SPACES
LOT 1-4B-3	15,200 Sq. Ft.	17 SPACES
LOT 1-4C	38,000 Sq. Ft.	40 SPACES
LOT 1-5A	4,727 Sq. Ft.	35 SPACES
LOT 1-5B	13,500 Sq. Ft.	15 SPACES
LOT 1-6	284,600 Sq. Ft.	294 SPACES
LOT 1-7	600,000 Sq. Ft.	687 SPACES
LOT 1-8	350,000 Sq. Ft.	389 SPACES
LOT 1-9A	137,000 Sq. Ft.	152 SPACES
<b>TOTAL</b>	<b>*1,569,716 Sq. Ft.</b>	<b>1,853 SPACES</b>

PLS. VISIT TO NOTICE OF PROJECT CHANGE, NEPA CERTIFICATE #074, 1,370,000 SQUARE FEET PERMISSIBLE



**MASTER PLAN**



OWNER/APPLICANT  
**WESTMINSTER BUSINESS PARK, LLC.**  
 41 WEST STREET  
 8TH FLOOR  
 BOSTON, MASSACHUSETTS  
 (617) 428-8000

ENGINEER:  
**CFS ENGINEERING**  
 66 ELM STREET  
 SHREWSBURY, MASSACHUSETTS  
 774-437-1043

DATE: MAY 2008 REV: FEB. 2012  
 (schematic)

WBP MASTER PLAN 3/12